

Readouts and Measurement Systems

Optical Measuring Projector

All readout and measurement systems can be used with any of our Optical Measuring Projectors.

Quadra-Chek® 100



The Quadra-Chek 100 is our most basic readout/measurement system. It is a flexible, compact and precise digital readout for 2-axis measuring instruments. Features include:

- High-visibility LCD display
- Versatile display console
- Resolution 0.00005" (0.001 mm)
- Inch/metric conversion
- Incremental or absolute measurement
- Zero reset
- Linear error compensation
- Sound feedback
- RS232C serial port
- Parallel port
- Languages – English, Spanish, Italian, German, French

Quadra-Chek® 200



The Quadra-Chek 200, our most popular choice, is an advanced digital readout system that performs highly precise and accurate 2-axis measurements. With this sophisticated system, you can record desired feature and construction measurements quickly, easily and accurately with the time-saving, patented Measure Magic® technology. Features include:

- All of the features of the QC 100 (*see above*)
- Resolution 0.00005" (0.001 mm)
- Single key calculation for angles, radius/diameter, distances, etc.
- Available with Automatic Edge Detection (*see details below*)
- Skew function for rapid part alignment correction
- Display in either polar or Cartesian coordinates
- 200 point feature memory (stored or displayed)

QC200 Plus Automatic Edge Detection

Achieve higher throughput, more accurate measurements, and more consistent data with optical comparators using optical edge detection. Automatic point entry reduces operator subjectivity and fatigue.

Intuitive Displays View measurement data easily on a crisp, clear, bright, black-and-white LCD designed for the contemporary metrology shop floor. Tilt the display for multiple viewing angles.

Consistent User Interface A proven interface consistent with other Quadra-Chek products that ensures operator accuracy and reduces training time.

Options Optional remote keypads, footswitches and printer help capture the precise measurement data more conveniently while streamlining the work process.

Sound Feedback Listen for helpful sound feedback from the powerful built-in speaker. Different sound cues prompt operator action without interrupting workflow, speeding data entry.

Results Display important measurement data in an uncluttered, comprehensive display.

Data Management Quadra-Chek digital readouts allow operators to easily analyze and communicate measurements throughout the department and the entire organization.

Print Output Print measurement results using a serial or parallel printer in an easy-to-read format.

Data Output Parallel and serial ports make it easy to transfer data to PC's, networks and printers.

Specifications subject to change.

Starrett®
Metrology Systems Division

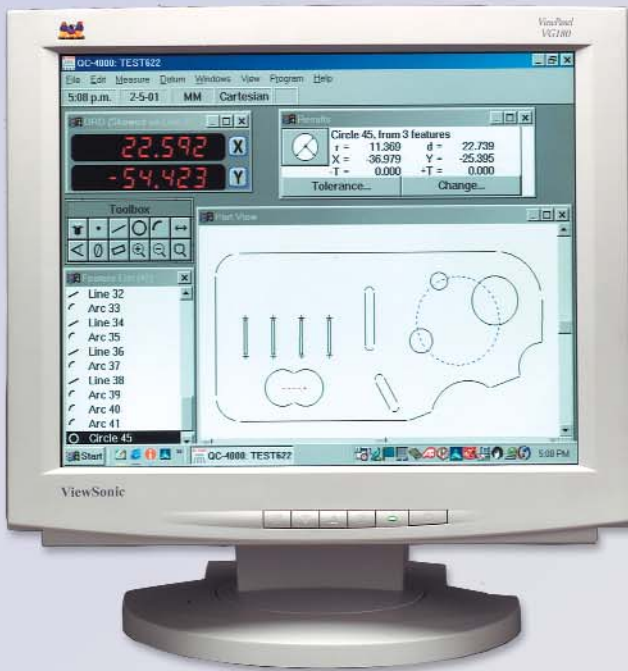
See the reverse side for other
Readout/Measurement Options

770-590-7737 • www.starrett.com

Readouts and Measurement Systems

Optical Measuring Projectors

Quadra-Chek® 4200



Our top of the line Quadra-Chek 4200 is a Windows-based PC and software package that supports 2-4 axis measurement of 2D parts is designed for use with optical comparators.

Quadra-Chek metrology software features an easy-to-use program interface that improves productivity, reduces subjectivity and simplifies repetitive tasks. Operators can easily format, analyze and communicate measurements throughout the company and around the world. Features include:

- Windows protocols
- Graphic user interface
- Icon-based tools and toolbars
- Color-coding
- Audio feedback
- Contextual help
- Intelligent, time-saving protocols
- CAD export
- SPC export
- CNC control
- Optical Edge Detection
- Custom reporting

CNC and Edge Sensing Capability

Perform repetitive measurements at high speed and reduce time-consuming and subjective crosshair alignment by combining the speed of QC-CNC with the ease and accuracy of Automatic Edge Sensing.

Programming and Automation

Simplified Program Creation Turn on the Record function and the software “learns” the datums, measuring sequence, tolerances and reporting functions for subsequent parts.

CAD File Import Import pre-existing part specifications from CAD programs to jumpstart the part programming process and eliminate transcription errors. The QC-4000 imports the .DXF file from your CAD system and, simply by selecting the features you want measured, will automatically create the part program for you! With QC-CNC, the QC-4000 can also perform a path optimization, again making your inspection time faster without sacrificing accuracy.

*See the reverse side for other
Readout/Measurement Options*

Guided Program Use Visual and audio cues, guide operators through programmed sequences, simplifying the measurement process for entire parts or specific sequences.

Palletization QC-CNC provided turnkey automation solutions for gang fixturing and other automated measurement applications.

Auto Circle By positioning the optical edge probe inside the circle near the center, and then selecting the Auto Circle command, your system will automatically compute the circle radius, diameter and center point location using 4 or 8 points.

Report Wizard — Printouts To Your Specifications

Generate high-quality reports with easy-to-use report templates that simplify the selection and formatting of dates. Report Wizard is a powerful, versatile tool that is used to create templates and customize printouts to your exact requirements. The flexibility of this report generator will not only help you to conform to your ISO specifications, but will enable you to send data directly from the QC-4000 to an ASCII file or an SPC package.

Specifications subject to change.

Starrett®
Metrology Systems Division

1000 Cobb Place Boulevard, Building 100, Suite 100
Kennesaw, GA 30144

Tel.: 770-590-7737 • Fax: 770-590-7511

www.starrett.com

Bulletin No. xxx 10M/xx 0304

J.W. DONCHIN CO.

www.jwdonchin.com

Precision Measuring Equipment and Industrial Supplies since 1924.

4841 W. Chicago Ave. - Chicago, IL 60651 • Phone: 773-261-2182 • Fax: 773-261-2867 • sales@jwdonchin.com

J.W. Donchin Co. was established in 1924 and has been known world wide ever since. Customer Service is our Main Focus. We offer **Expert Product Knowledge, Large Stocking Inventory and Competitive Pricing** to assist you in locating and selecting the correct tool or product to fit your needs. (J.W. Donchin Co. is one of L.S. Starrett's largest stocking distributors.)

Contact Information:

Sales

Phone: 773-261-2182

Fax: 773-261-2867

Email: sales@jwdonchin.com

Website: www.jwdonchin.com