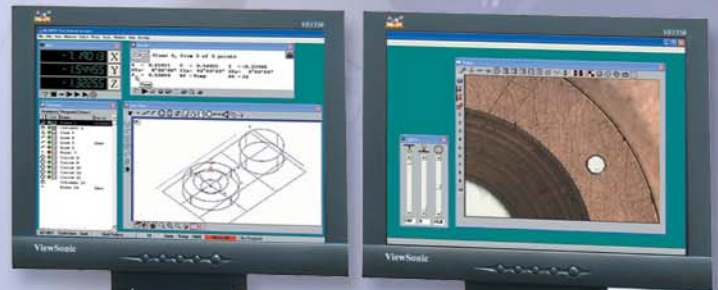


Starrett®

The Power of Video Measuring



***Fast, simple, powerful,
accurate and cost effective
video-based
measuring systems.***

The Power of Video Measuring

With the unbeatable combination of precision mechanics, powerful and intuitive software, and support from the most respected name in measurement, Starrett's Galileo Video Measuring Systems take video-based measuring to the next level.

From simple, manual, single-feature operation to complex, automated part measurements, Galileo combines high-resolution images with the latest in computer software technology and a precision mechanical platform to deliver superb accuracy for a wide range of measuring applications.

Galileo Systems are available in a number of configurations to meet different measuring applications. Choices include manual control to fully automated systems, as well as several options for both lighting and magnification.

Galileo is easy to use, versatile, accurate, and with a wide range of options, you can configure a Galileo system that's just right for your application and budget.

Work Envelope
X: 6" or 12",
Y: 6", Z: 5.5"

Larger sizes are also available.

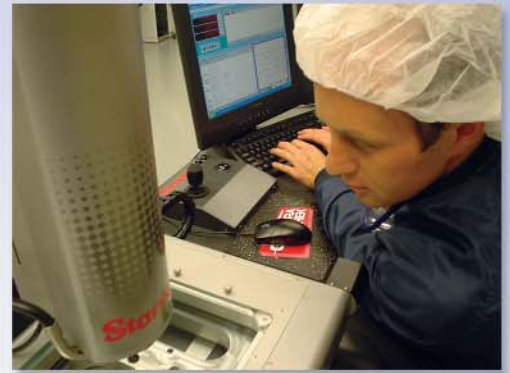


On the cover: Galileo 12" CNC System.

Right: Galileo 6" CNC System



A User's Galileo Experience



After carefully comparing several video measuring systems, UltraSource, Inc. of Hollis, NH recently purchased a Galileo CNC System. Here are some comments by UltraSource Quality Assurance Manager, Daniel Tessier:

"I decided to see demonstrations (of four systems) ... two of the systems didn't have the necessary accuracy or precision (and) had unacceptable repeatability limitations ... another system met requirements but was ... almost twice the cost of the Starrett Galileo QC-5000 Automated Video Measurement System."

"Galileo's software is easy to understand. Within days (we) were able to write and design complex programs for our highest volume customers (and) ... is flexible enough that our lower volume, semi-repeat jobs can be programmed in a few hours."

"Training was fast and excellent by Starrett personnel."

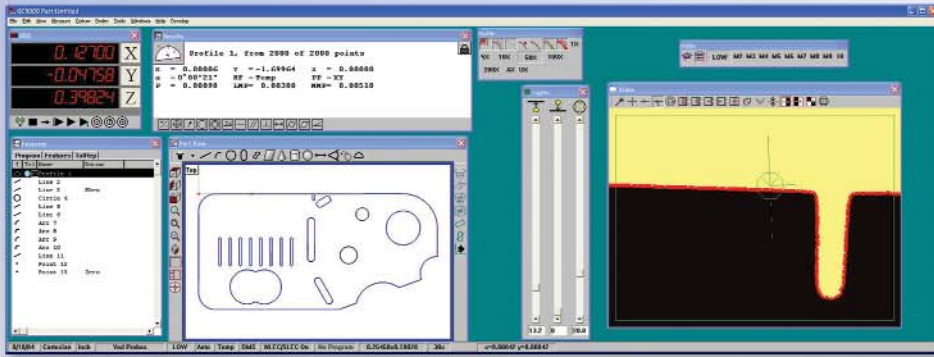
"The Starrett system ... will easily pay for itself in saved inspection time alone."

"With the Starrett Galileo Video Measurement System, total gage repeatability and reproducibility error was reduced ... an improvement of over 85%."

"I would highly recommend this system to any company searching for a cost effective one that can both inspect in automated and manual modes."

See the applications section of the Starrett Website (www.starrett.com) for the complete story of UltraSource's experience with Galileo.

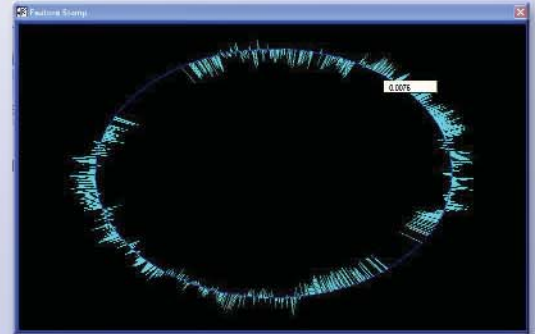
Control Systems & Metrology Software



Galileo CNC Systems include the powerful, industry-leading Metronics Quadra-Chek QC-5000 software with dual monitors. This full-featured and intuitive metrology software features the familiar MS-Windows™ operating system.

Quadra-Chek® QC-5000 3-D Metrology Software

- Measure Magic allowing automatic feature recognition
- Drag and Drop Report Generator
- Video Image Capture (.jpg, .bmp) with graphical reporting capabilities
- Data Import for part programming and Export for reverse engineering
- Result Data Export to Microsoft Access, Excel, .CSV and .TXT formats for data collection and PC applications
- Integrated Video Scanning with 2-D Profiling/Best Fit Software
- Full Geometrical Feature Measurement
- Full Geometrical Tolerancing
- Fully customizable screen layout spread out over two monitors
- Lockable screen layouts
- Available in multiple languages
- Full suite of video edge detection (VED) Tools
- Integrated image processing tools
- Intuitive yet powerful part programming with point and click editing capabilities
- Interactive 3-D Part View
- Definable user access privilege levels
- Form Graphics/Features
- Free software updates



Form Graphics



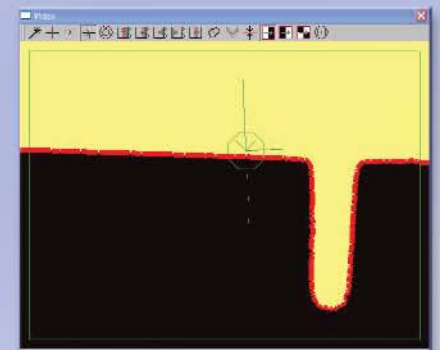
Video Capture Report

Manual System with Quadra-Chek® 200 Series

Galileo manual systems include a versatile and powerful Quadra-Chek 200 Series two or three axes digital readout, with:



- Inch/metric conversion
- Incremental or absolute measurement
- Zero reset
- Linear error compensation
- RS232C interface for SPC data collection
- Skew function for part alignment correction
- Form indication (roundness, etc.)
- Part programming
- Point, Arc, Circle, Distance, and Angle measuring ability with GD & T



Scanning with the Worm Tool



Features & Specifications



Optics: 12:1 Video zoom package on CNC systems with Video Magnifications of 15X to 550X* and 6:1 Video zoom on manual systems with Video Magnifications of 15X to 350X*

Lighting: Fiber Optic ring and sub-stage (bottom) lighting with Fiber Optic Coaxial (through the lens) available as an option or White LED ring and sub-stage with White LED Coaxial (through the lens) available as an option.

Video Camera: Color CCD, 768H X 494V pixel array.

VGA Display:

CNC Systems: Choice of two 17" SVGA CTR monitors, two 15" LCD monitors, or two 17" LCD monitors.

Manual Systems: Choice of 13" hi-res Color Video Monitor or 15" LCD Color Video Monitor

Drive Method:

CNC Systems: X/Y/Z and Zoom Stepper drives with Joystick control for X, Y, and Z

Manual Systems: X & Y Handwheels with Coarse, Fine, and Quick positions

Travel & Measuring Capacity:

X: 6" or 12" (150mm or 300mm)

Y: 6" (150mm)

Z: 5.5" (140mm)

Metrology Software:

CNC System: Metronics Quadra-Chek QC-5000 3 dimensional software

Manual Systems: Choice of Metronics Quadra-Chek QC220 2 dimensional readout, Metronics Quadra-Chek QC230 2.5 dimensional readout, or Metronics Quadra-Chek QC-5000 3 dimensional software

Linear Accuracy:

CNC Systems: (X&Y): $E2=1.9+5L/1000$, (Z): $E1=2.5+5L/1000^{**}$

Manual/Joystick Systems: (X&Y): $E2=3.5+8L/1000$, (Z): $E1=2.5+5L/1000^{**}$

Resolution: 0.0005mm (.00002")

Maximum Workload: 40 lbs. (18 kg.)

Warranty: One year

* Auxilliary lenses required to acheive full magnification ranges

**Accuracy is achieved at the glass plate level at 68F +/- 1F (20C +/- 1/2 C) using maximum magnification with 2X auxilliary lens.

Options & Accessories

- 1/4X, 1/2X, 3/4X, 1 1/2X, and 2X Auxilliary Lenses
- CNC Rotary Positioning Device
- Integrated Workstation
- Video Side Probes
- Touch Probe
- Adjustable 4" (100mm) Z-axis Dovetail Slide
- Four Quadrant LED Ring Light
- Trackball joystick

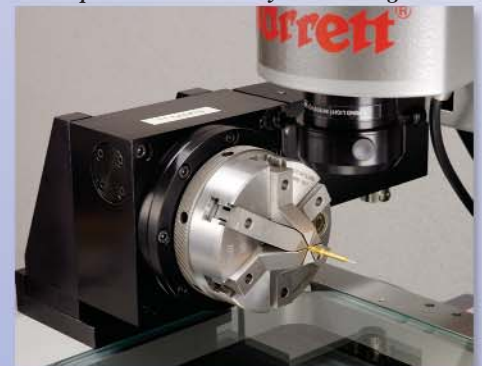


Above: Optional 4-Quadrant LED Ring Light



Above: Optional Touch Probe

Below: Optional CNC Rotary Positioning Device



J.W. DONCHIN CO. www.jwdonchin.com

Precision Measuring Equipment and Industrial Supplies since 1924.

4841 W. Chicago Ave. - Chicago, IL 60651 • Phone: 773-261-2182 • Fax: 773-261-2867 • sales@jwdonchin.com

J.W. Donchin Co. was established in 1924 and has been known world wide ever since. Customer Service is our Main Focus. We offer **Expert Product Knowledge, Large Stocking Inventory and Competitive Pricing** to assist you in locating and selecting the correct tool or product to fit your needs. (J.W. Donchin Co. is one of L.S. Starrett's largest stocking distributors.)

Contact Information:

Sales

Phone: 773-261-2182

Fax: 773-261-2867

Email: sales@jwdonchin.com

Website: www.jwdonchin.com